

South Brandywine Closure/ Middle School Transitions

Transition Meeting #1 January 2, 2019

OPTION 1 - K-5 GRADE STRUCTURE

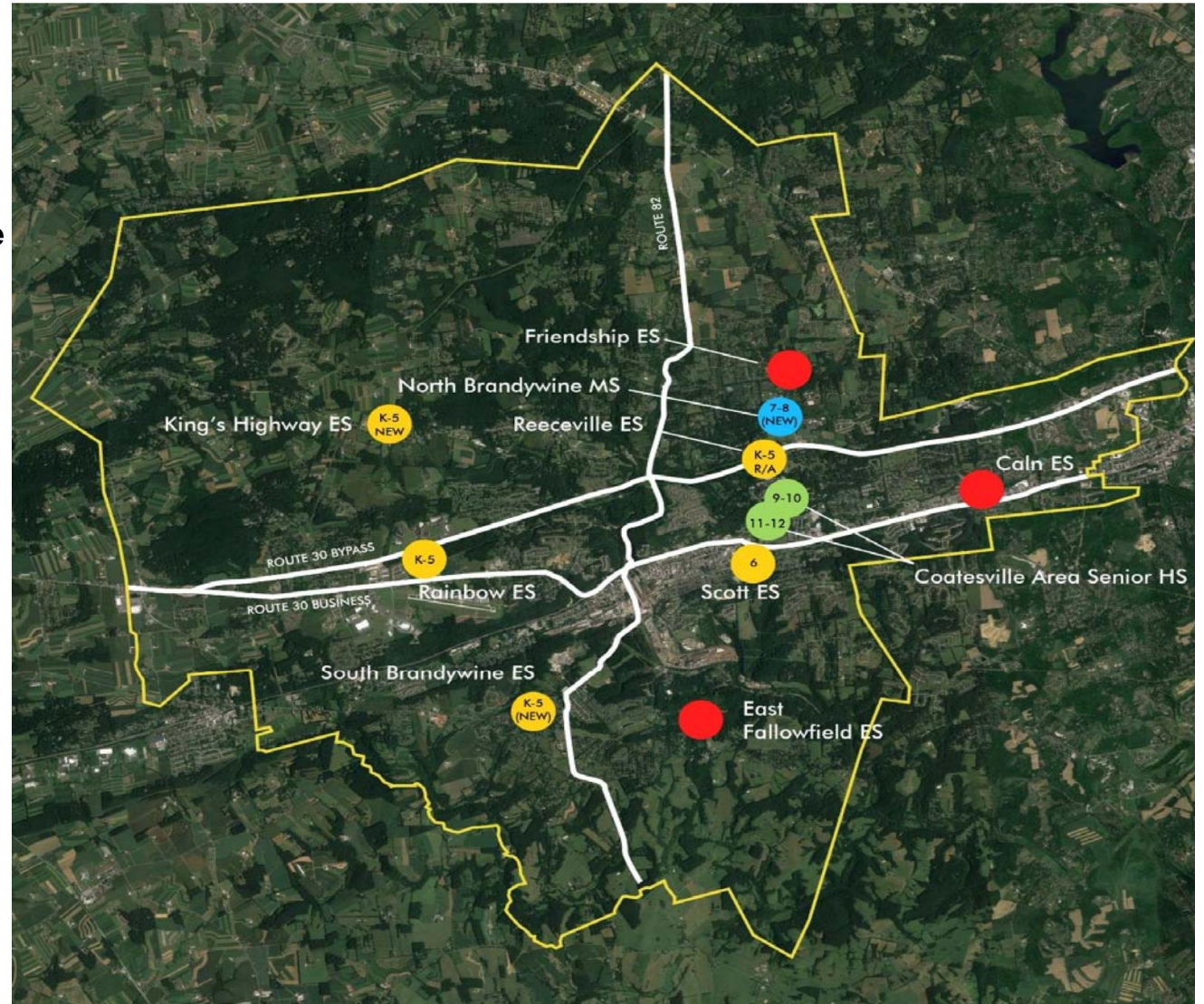
Option 1D:

- Maintain 8 Schools
 - Caln, Friendship, East Fallowfield ESs off-line
 - Renovations/Additions at Reeceville ES; (2) New Elementary Replacement Schools
- Convert Scott MS to 6th Grade Center
- One new consolidated 7-8 Middle School

Observations:

- *Regional K-5 Elementary Schools approx. the same size*
- *Scott 6th Grade Center could run on ES bus schedule*
- *All students together from Grade 6 through 12th Grades; schools centrally located in school district*
- *One new ES at South Brandywine campus; one new 7-8 School at the North Campus*

COATESVILLE AREA SCHOOL DISTRICT



Considerations for the Consolidation of Middle Schools



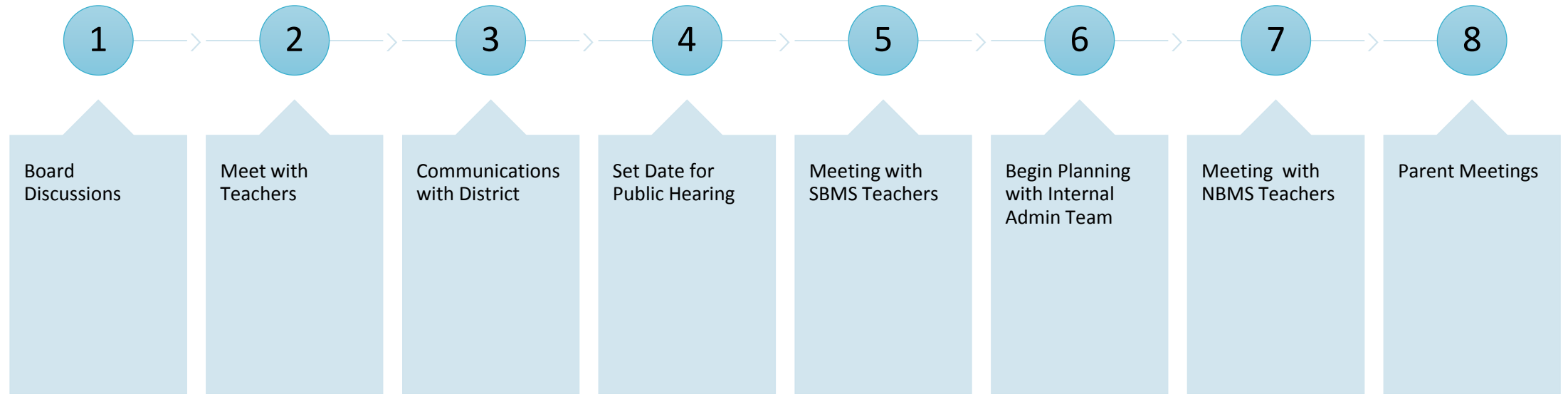
BRINGING STUDENTS TOGETHER AS ONE GRADE
LEVEL BEFORE 9TH GRADE TO DEVELOP
FRIENDSHIPS, BUILD RELATIONSHIPS, AND
STRENGTHEN COMMUNITY



BRINGING TEACHERS TOGETHER IN A SINGLE
BUILDING TO STRENGTHEN THE MIDDLE SCHOOL
EXPERIENCE FOR ALL STUDENTS.



COST SAVINGS ON FACILITY MAINTENANCE,
REPAIRS



Accelerating the Master Facility Plan

The background features a series of concentric circles in light gray, some solid and some dashed, creating a ripple effect. A large, solid orange oval is centered on the page, containing the main title and subtitle. A dark gray, curved, comma-like shape is positioned to the left of the orange oval, partially overlapping it.

Master Facility Plan

Feasibility Study



Questions/Concerns

Next Steps



MEETING DATES (SEE
AGENDA)



DEVELOP COMMITTEES



WEBSITE UPDATES



REPORT BACK TO THE BOARD
OF SCHOOL DIRECTORS